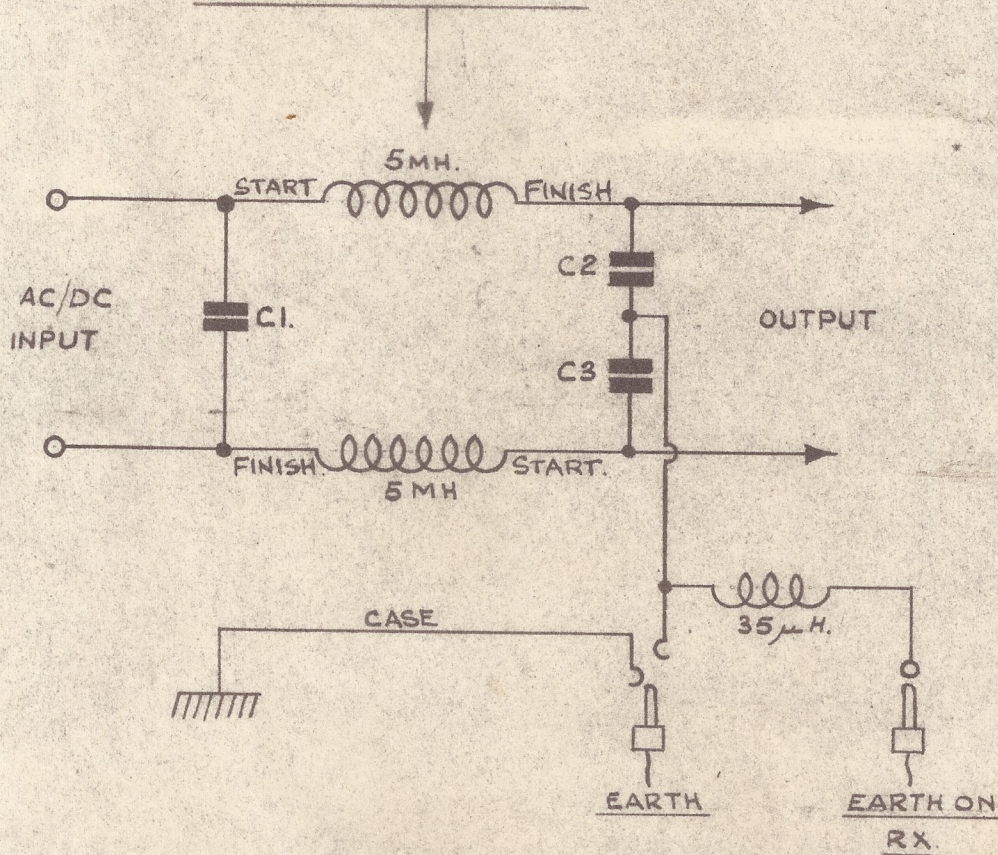


# REVISIONS.

CONNECT 5mH CHOKES  
IN PHASE OPPOSITION.



FILTER UNIT.

S.732.

STRATTON & CO. LTD.  
BIRMINGHAM  
ENGLAND

DRAWING No. B.P.692.

DRAWN EH.

TRACED

CHECKED

APPROVED

DATE 8-6-48.

MATERIAL.

SUPPLIER.

OUR ORDER.

FINISH

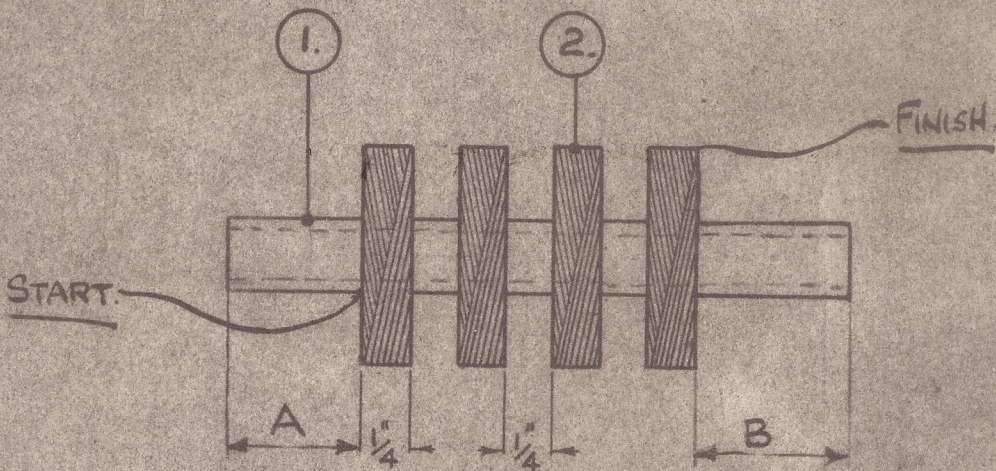
TOLERANCES

FRACTIONAL  $\pm$

OTHERWISE AS STATED



# REVISIONS.



WINDING. 4 HONEYCOMB SECTIONS OF 250 TURNS PER SECTION. (APPROX.)

GEARS A. B. C. D. E. F.  
DOUGLAS M/C 50. 40. 35. 42. 60. 60.

FINISH. EACH SECTION TO BE SEALED WITH WAX WHEN WINDING; & SEAL WITH DOMOLAC WHEN CHOKE IS COMPLETELY WOUND.

FOR FULL DETAILS REFER TO WORKS ORDER PARTS LIST.

QTY	DESCRIPTION	PART NO.
1.	FORMER.	3752.P.
2	29 SWG. ENAM. COPPER WIRE	—

INDUCTANCE 5 mH.

INSPECT. DRY. BAKELITE VARNISH ALL OVER.

FILTER UNIT — CHOKE.

D1322:— "A" =  $\frac{1}{16}$ " "B" =  $\frac{13}{16}$ "

D1322/1:— "A" =  $\frac{13}{16}$ " "B" =  $\frac{1}{16}$ "

S. 732.

STRATTON & CO. LTD.  
BIRMINGHAM  
ENGLAND

DRAWING No. D1322.

DRAWN EH

TRACED

CHECKED

APPROVED

DATE 1-6-48.

MATERIAL.

SUPPLIER.

OUR ORDER.

FINISH

TOLERANCES

FRACTIONAL  $\pm$

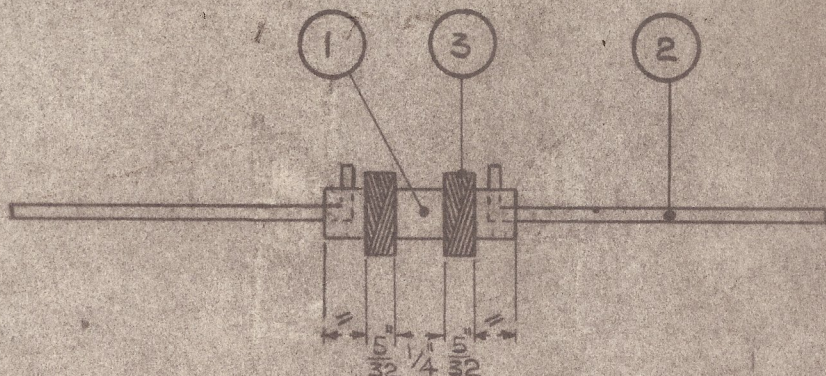
OTHERWISE AS STATED



# REVISIONS.

A.

FORMER WAS 1191P.  
RSS. 10-9-53



WINDING. 2 HONEYCOMB SECTIONS OF 50 TURNS PER SECTION.

GEARS.

A. B. C. D. E. F.

DOUGLAS M/C.

50 38 40 50 60 60.

FINISH.

EACH SECTION TO BE SEALED WITH WAX WHEN  
WINDING; & SEAL WITH DOMALAC WHEN CHOKE  
IS COMPLETELY WOUND. SOLDER ENDS AT POINTS 'X'  
INSPECT. DRY & WAX IN CONVEYOR, USING  
LPRM-3 WAX.

INDUCTANCE: 35  $\mu$ H.

FOR FULL DETAILS REFER TO WORKS ORDER PARTS LIST.

QTY	DESCRIPTION	PART No.
1.	FORMER.	4774R
2.	WIRE ENDS.	2996P
3.	34 S.W.G. D.S.C. WIRE.	—

SUPPRESSOR CHOKE.

D.1323.

S 732

STRATTON & CO. LTD.  
BIRMINGHAM  
ENGLAND

DRAWING No. D.1323.

DRAWN E.H.

TRACED

CHECKED

APPROVED

DATE 1-6-48.

MATERIAL.

SUPPLIER.

OUR ORDER.

FINISH

TOLERANCES

FRACTIONAL  $\pm$

OTHERWISE AS STATED



SPECIFICATION NO. S.732.

FILTER UNIT.

Diecast box type S.650 is used for this mains filter unit which is primarily intended for use with the Marine receiver type S.670.

The filter circuit, which is of the condenser input type, utilizes three 600 V working. .05mfd. tubular paper condensers with <sup>two</sup> 5 mH chokes for mains filtering, and one R.F. choke in the inter-unit earth lead.

For the earth sockets, two Clix type wander plugs are supplied. A "Flexo" moulded socket with short twin cable is permanently fitted at the output end of the unit for connection to a receiver, whilst at the input end, a sunken type two pin plug is fitted for mains connection. The mains supply cable on the "670" receiver is removed and plugged into the latter.

If the unit only is required then a "Flexo" moulded socket with 6ft of twin flex is supplied for mains connection to the unit.

In order to ensure that the chokes are safeguarded in the event of a breakdown of either of the output condensers, two pieces of 38 SWG. enam. copper wire are used to complete the wiring between these condensers.

DIMENSIONS:-4.11/16" x 3.11/16" x 2.3/16".

WEIGHT:- 1 <sup>3</sup>/<sub>4</sub> lbs.