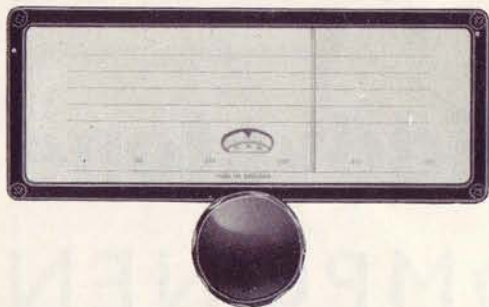


# EDDYSTONE

## GEARED SLOW MOTION DRIVE ASSEMBLY

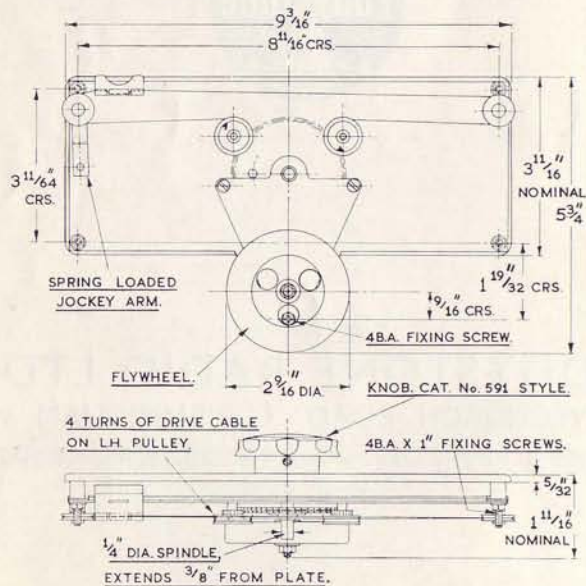
Cat. No. 898



A high grade assembly designed for receiver and instrument applications. The movement, manufactured to fine tolerances, is free from backlash, gear-driven and flywheel loaded, giving a smooth, positive drive, with a reduction ratio of 110 to 1.

The pointer has a horizontal travel of 7 inches. A circular vernier scale, marked over 100 divisions, rotates five times for one traverse of the pointer, and, read with the "100" scale on the dial, provides a total of 500 divisions. The dial has five lines to take calibration markings. The vernier dial has a cam adjustment for correct zero setting. A spring loaded jockey arm maintains tension of the pointer drive.

A diecast escutcheon, finished glossy black, is supplied and the assembly is complete with perspex window, knob, fixing screws, and mounting template. It is suitable for mounting on metal or wooden panels up to .25" thick. Overall external dimensions are  $9\frac{3}{16}$ " (23.34 cms.) by  $5\frac{3}{4}$ " (14.6 cms.). Weight is approximately 1 lb. 14 ozs. (.85 kilogrammes).



# EDDYSTONE

## DIECAST BOXES



7134P Aluminium



6908P Aluminium



903 Aluminium



6807P Aluminium

Made of Aluminium alloy, in four sizes, with a natural finish, each box is supplied with close fitting flanged lid, securely held with countersunk 4BA Phillips head screws. These boxes invaluable for many purposes, are particularly applicable where a high degree of electrical screening is necessary. The available types are listed below.

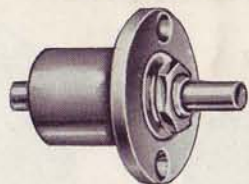
Approximate internal dimensions:—

Cat. No. 7134P	$4\frac{1}{4} \times 2\frac{1}{4} \times 1$ "	weight $4\frac{3}{4}$ ozs.
Cat. No. 6908P	$4\frac{1}{2} \times 3\frac{1}{2} \times 2$ "	weight $9\frac{1}{2}$ ozs.
Cat. No. 6827P	$7\frac{1}{2} \times 4\frac{1}{2} \times 2$ "	weight 16 ozs.
Cat. No. 903	$7\frac{1}{2} \times 4\frac{1}{2} \times 3$ "	weight 21 ozs.

*When ordering please identify requirement by use of the above catalogue numbers only.*

For lowest RF leakage, optimum results will be obtained by mounting the inductor coil with its axis upright in the box so that the magnetic line of force is not parallel with the lid.

## SLOW MOTION DRIVE ASSEMBLY



Cat. No. 892

**Epicyclic Ball-bearing Driving Head Cat. No. 892.** Bush threaded and fitted with dial plate lock-nut.  $\frac{1}{4}$ " diameter spindles. Diameter of hub  $\frac{1\frac{1}{8}}$ ", overall length 2". Control spindle is hardened, ground and polished. Fixes with two 4BA countersunk head screws. The reduction ratio is approx. 10 to 1.

## FLEXIBLE COUPLERS



Cat. No. 50

These flexible couplers are offered in two sizes, accepting  $\frac{1}{4}$ " spindles. They have numerous applications, and the high voltage ratings permit use with condensers or other components at potentials above earth. The design ensures complete flexibility and freedom from backlash. Insulating material is white DL12 moulding for the Cat. No. 50, and the Cat. No. 893 utilises nylon loaded bakelite.

Cat. No.	Diameter	Width	Hub
50	1 $\frac{1}{2}$ "	$\frac{1\frac{1}{2}}$ "	$\frac{1}{2}$ " dia.
893	1 $\frac{1}{8}$ "	$\frac{7}{8}$ "	$\frac{1}{2}$ " dia.

British Made by:

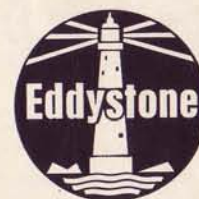
**EDDYSTONE RADIO LTD.**

ALVECHURCH ROAD · BIRMINGHAM 31

Telephone: 021-475 2231 Cables: EDDYSTONE, BIRMINGHAM

Telex: 33708

# Eddystone COMPONENTS



British Made by:

**EDDYSTONE RADIO LTD.**

ALVECHURCH ROAD · BIRMINGHAM 31

Telephone: 021-475 2231 Cables: EDDYSTONE BIRMINGHAM

Telex: 33708